

K-LINE

Current Transformers



***Measurement & Protection CTs
Resin Encapsulated
Ring Type***



**Tested to latest
IEC 61869-1 & 2**

K-Line Resin Encapsulated Current Transformers

K-Line Measurement and Protection Current Transformers (MCTs & PCTs) are designed and constructed with latest technology to cope with nowadays switchboard manufacturer's need. K-Line MCTs & PCTs have been type-tested by CNAS to the latest IEC 61869-1 & 2 standards. All CTs are resin encapsulated which are more robust in structure and have better dielectric strength and environmental protection than the conventional wire-wound type CTs. They are ideal for use in high quality projects or in locations where high humidity, corrosive fumes or dusts are present. K-Line CTs comply with the current specifications of the Hong Kong government and the Hong Kong Housing Authority. They also meet other stringent requirements from most prestigious developers and consultants.

Special Features of K-Line CTs

- Complied to latest IEC 61869-1 & 2 which superseded IEC 60044-1
- High accuracy and reliability
- High dielectric strength
- Great mechanical resistance and environmental protection
- Wide range of frame sizes, CT ratios, accuracy classes and VA burdens
- Both 1A and 5A CTs are available
- Optional CT clamps are available upon request



Technical Data

	MCTs	PCTs
Frame Size	1A, 2A, 3A, 4A, 5A	1E, 2E, 3E, 4E, 5E
CT Ratio	3000/5, 2500/5, 2000/5, 1600/5, 1200/5, 1000/5, 800/5, 600/5, 500/5, 400/5, 300/5, 250/5, 200/5, 150/5, 100/5, *60/5, *30/5 <i>(* denotes multiple primary turns required)</i>	3000/5, 2500/5, 2250/5, 2000/5, 1600/5, 1200/5, 1000/5, 800/5, 600/5, 500/5, 400/5, 300/5, 250/5, 200/5, 150/5, 100/5, *60/5 <i>(* denotes multiple primary turns required)</i>
Accuracy Class	0.2, 0.5, 1, 3, 5	5P20, 10P20, 5P15, 10P15, 5P10, 10P10
Burden	2.5, 5, 7.5, 10, 15	2.5, 5, 7.5, 10, 15
International Standard	IEC 61869-1 & 2	IEC 61869-1 & 2
Nominal Strength (AC Primary)	0.72kV	0.72kV
Dielectric Strength	3kV for 1 minute	3kV for 1 minute
Nominal Frequency	50/60 Hz	50/60 Hz

Performance Specifications and Standard Stock for K-Line MCTs & PCTs

indicates that this type of CT could be provided upon request.

indicates that this type of CT is available as standard stock.

Resin Encapsulated Measurement Current Transformers (MCTs)

Type and Frame Size	Ratio	VA	Class 5					Class 3					Class 1					Class 0.5					Class 0.2														
			2.5	5	7.5	10	15	2.5	5	7.5	10	15	2.5	5	7.5	10	15	2.5	5	7.5	10	15	2.5	5	7.5	10	15										
M1A	30/5A(NP=3)																																				
	60/5A(NP=2)																																				
	100/5A																																				
	150/5A																																				
M2A	100/5A																																				
	150/5A																																				
	200/5A																																				
	250/5A																																				
	300/5A																																				
	400/5A																																				
M3A	500/5A																																				
	600/5A																																				
	800/5A																																				
	1000/5A																																				
	1200/5A																																				
M4A	500/5A																																				
	600/5A																																				
	800/5A																																				
	1000/5A																																				
	1200/5A																																				
	1600/5A																																				
M5A	1600/5A																																				
	2000/5A																																				
	2500/5A																																				
	3000/5A																																				

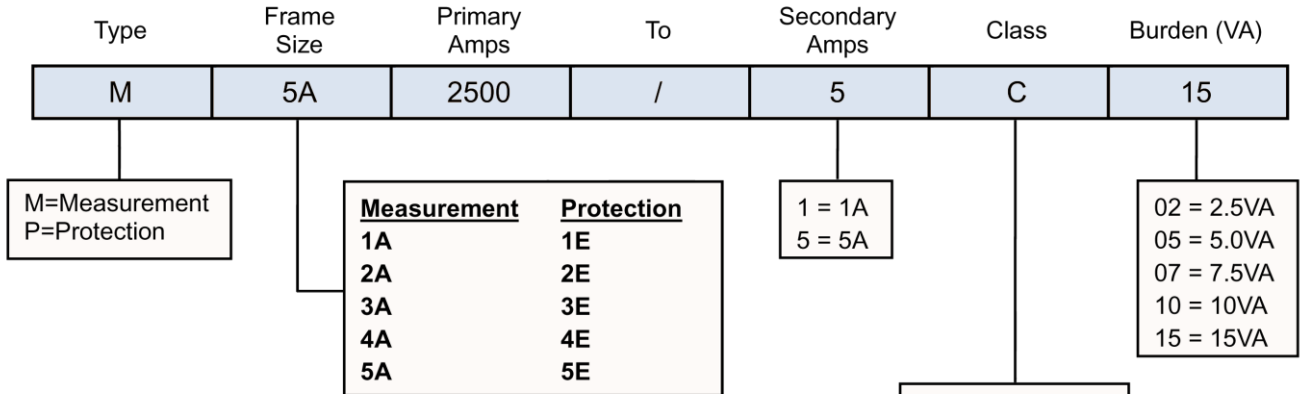
Note: "NP" denotes number of primary turns required

Resin Encapsulated Protection Current Transformers (PCTs)

Type and Frame Size	Ratio	VA	Class 10P10					Class 5P10					Class 10P15					Class 5P15					Class 10P20					Class 5P20									
			2.5	5	7.5	10	15	2.5	5	7.5	10	15	2.5	5	7.5	10	15	2.5	5	7.5	10	15	2.5	5	7.5	10	15	2.5	5	7.5	10	15					
P1E	60/5A(NP=2)																																				
	100/5A																																				
	150/5A																																				
P2E	100/5A																																				
	150/5A																																				
	200/5A																																				
	250/5A																																				
	300/5A																																				
P3E	500/5A																																				
	600/5A																																				
	800/5A																																				
	1000/5A																																				
P4E	1200/5A																																				
	1600/5A																																				
	500/5A																																				
	600/5A																																				
	800/5A																																				
	1000/5A																																				
P5E	1200/5A																																				
	1600/5A																																				
	2000/5A																																				
	2250/5A																																				
	2500/5A																																				

Note: "NP" denotes number of primary turns required

Ordering Code for K-Line Resin Encapsulated MCTs & PCTs



Example:

K-LINE MEASUREMENT CURRENT TRANSFORMER

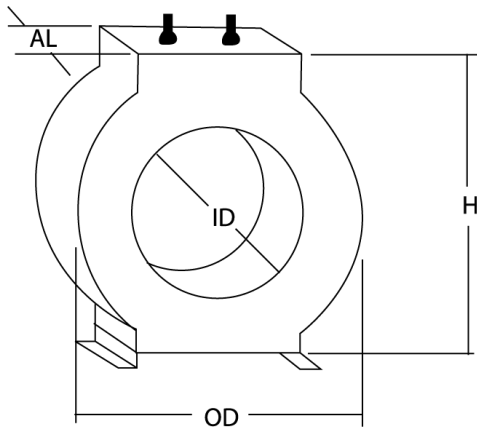
CAT.NO.: M5A2500/5C15 PRI/SEC CURRENT: 2500/5A
 S/N: 1310CB2-000004 ACCURACY CLASS: 1
 NO. OF PRIMARY TURNS: 1 BURDEN: 15VA
 INSULATION LEVEL: 0.72/3.0KV INSULATION CLASS: B
 IEC 61869-1&2 f_R=50Hz U_m= 0.72KV

K-LINE PROTECTION CURRENT TRANSFORMER

CAT.NO.: P5E2250/5J15 PRI/SEC CURRENT: 2250/5A
 S/N: 1310CB2-000001 ACCURACY CLASS: 5P20
 NO. OF PRIMARY TURNS: 1 BURDEN: 15VA
 INSULATION LEVEL: 0.72/3.0KV INSULATION CLASS: B
 IEC 61869-1&2 f_R=50Hz U_m= 0.72KV

- MEASUREMENT**
- A = Class 0.2
 - B = Class 0.5
 - C = Class 1
 - D = Class 3
 - E = Class 5
- PROTECTION**
- F = Class 5P10
 - G = Class 10P10
 - H = Class 5P15
 - I = Class 10P15
 - J = Class 5P20
 - K = Class 10P20

Frame Size and Dimension



Frame Size	OD	ID	H	AL
1A	86	28	95	38
2A	86	42	91	38
3A	97	57	105	28
4A	123	82	136	28
5A	156	114	170	28
1E	155	34	165	63
2E	155	42	165	63
3E	161	57	171	58
4E	178	82	189	44
5E	201	114	213	44

All dimensions in mm

<p>Rickson Engineering Ltd. 21/F, Sun Hing Ind. Building, 46 Wong Chuk Hang Road, Hong Kong. Tel: (852) 3120 7500 Fax: (852) 3120 7511 Email: general@rickson.com.hk Website: http://www.rickson.com.hk</p>	<p>利信機電有限公司 香港黃竹坑道 46 號 新興工業大廈 21 字樓</p>
---	--